

Isle of Anglesey County Council

Scrutiny Report

Committee:	Partnership and Regeneration Scrutiny Committee
Date:	16th September, 2025
Subject:	1. Scrutiny Members on Panels – Nominations based on Political Balance 2. Welsh Language and Equality Steering Group – Nomination
Scrutiny Chair:	Cllr Dylan Rees

1. Who will be the portfolio holder presenting / leading the report?

Portfolio Holder	Role
Not applicable	
Service Officer (Supporting)	Role
Anwen Davies	Scrutiny Manager

2. Why the Scrutiny Committee is being asked to consider the matter

- Nomination of Scrutiny Members to serve on Scrutiny Panels / working groups has been a matter for the Scrutiny Committees to agree
- Group Leaders recently agreed to amend the membership of Scrutiny Panels to be subject to political balance principles and rules¹.

3. Role of the Scrutiny Committee and recommendations

- ☐ For assurance
☐ For recommendation to the Executive
☐ For information
☒ For agreement

Recommendation(s):

The Committee is requested to:

R1 agree a revised process for membership of the 3 Scrutiny Panels based on the current political balance of the Council

R2 agree the terms of reference for each of the 3 Scrutiny Panels (as detailed in the appendices to this report)

R3 both Scrutiny Committees to nominate 1 Member to serve on the Welsh Language and Equality Steering Group.

¹ The Local Government and Housing Act 1989 sets out the main principles governing political balance of local authorities

4. How does the recommendation(s) contribute to the objectives of the Council's Plan?

Ensure effective governance arrangements underpinning a robust decision-making process.

5. Key scrutiny themes

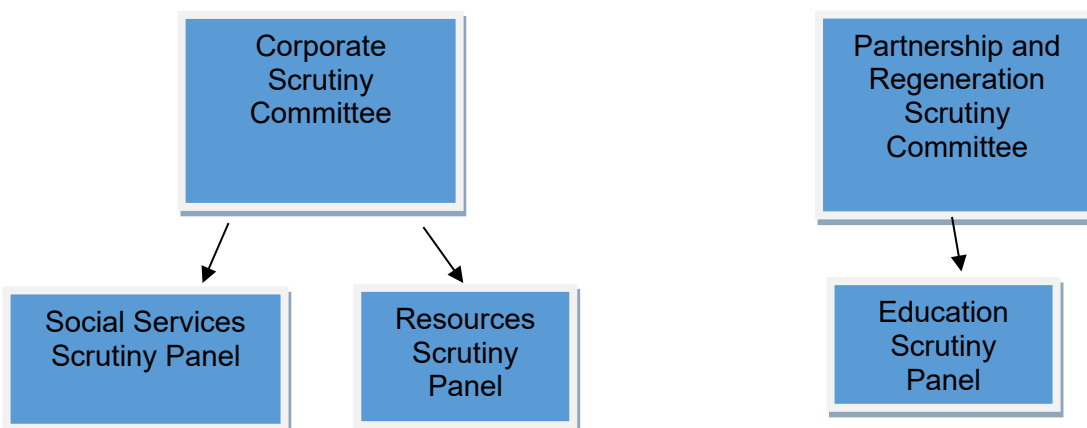
Not applicable

6. Key points / summary

1. SCRUTINY PANELS – NOMINATIONS BASED ON POLITICAL BALANCE

1.1 Scrutiny Committees form part of the way in which local government in Wales operates. Their prime role is to hold decision-makers to account, drive improvement, act as the voice of the community and play a role in policy development and review.

1.2 Our local structure comprises of 2 scrutiny committees and three panels:



1.3 The scrutiny panels have been established to undertake work streams on behalf of the parent scrutiny committees and are work groups without decision-making powers.

1.4 Group Leaders recently² agreed that the membership of these scrutiny panels should be amended to reflect the political balance of the Council. Below are details of the current membership of each scrutiny panel and the membership based on the political balance formula for the Council:

Key:

Political Groups

PC - Plaid Cymru – The Party of Wales

GA - Y Grŵp Annibynnol (The Independent Group)

AM - Annibynwyr Môn (Anglesey Independents)

LIC - Llafur Cymru / Welsh Labour

² Meeting of Group Leaders convened on 1st May, 2025

RESOURCES SCRUTINY PANEL

Current Membership		Membership based on Political Balance Rules
Member	Political Group	
Cllr Geraint ap Bebb	PC	3 – PC
Cllr Dylan Rees	PC	
Cllr Ken Taylor	PC	
Cllr Ieuan Williams	GA	1 - GA
Cllr Keith Roberts	LIC	1 - LIC
Vacant seat	AM	1 – AM

SOCIAL SERVICES SCRUTINY PANEL

Current Membership		Membership based on Political Balance Rules
Member	Political Group	
Cllr Euryrn Morris	PC	4 – PC
Cllr Llio Angharad Owen	PC	
Cllr Jackie Lewis	PC	1 - GA
Cllr Sonia Williams	PC	1 - LIC
Cllr John Ifan Jones	PC	2 – AM
Cllr Ieuan Williams	GA	
Cllr Pip O'Neill	LIC	
Cllr Jeff Evans	AM	

EDUCATION SCRUTINY PANEL

Current Membership		Membership based on Political Balance Rules
Member	Political Group	
Cllr Margaret Roberts	PC	4 – PC
Cllr Non Dafydd	PC	
Cllr Arfon Wyn	PC	
Cllr Alwen Watkin	PC	1 - GA
Cllr Gwilym Jones	GA	1 - LIC
Cllr Ieuan Williams	GA	2 – AM
Cllr Keith Roberts	LIC	
Cllr Derek Owen	AM	

2. SCRUTINY PANELS – TERMS OF REFERENCE

2.1 As Members will recall, an improvement plan has been adopted by the Council incorporating recommendations to build on and further strengthen our Scrutiny function within a culture of incremental, continuous improvement. A more streamlined and flexible structure is one of our 5 key improvement themes with the aim of ensuring a well-designed structure where “form follows function” can support Scrutiny to have better

outcomes. We have therefore reviewed the terms of reference of our 3 scrutiny panels and have reduced the number of formal panel meetings to create Member capacity to complete more fieldwork in Education and Social Services.

2.2 Attached, for endorsement, are the amended terms of reference for each of the scrutiny panels as follows:

- i. Resources Scrutiny Panel – **Appendix 1**
- ii. Social Services Scrutiny Panel – **Appendix 2**
- iii. Education Scrutiny Panel – **Appendix 3.**

3. WELSH LANGUAGE AND EQUALITY STEERING GROUP – NOMINATION

3.1 This is a new group which first met in May 2025 and replaces the Welsh Language Promotion Group when its terms of reference was revised to include the field of equality.

3.2 Both Scrutiny Committees are requested to nominate one Member to serve on the Welsh Language and Equality Steering Group. The terms of reference of the Steering Group is attached (**Appendix 4**) in order to assist Members in the selection process.

7. Impact assessments

7.1. Potential impacts on groups protected under the Equality Act 2010

Not applicable for this overarching issue.

7.2. Potential impacts on those experiencing socio-economic disadvantage (strategic decisions)

Not applicable for this overarching issue.

7.3. Potential effects on opportunities to use Welsh and not treat the language less favourably than English

Not applicable for this overarching issue.

7.4. Potential impact on the Council's Net Zero Carbon target

Not applicable.

8. Financial implications

Not applicable.

9. Appendices

Appendix 1: scope and remit of the Resources Scrutiny Panel

Appendix 2: scope and remit of the Social Services Scrutiny Panel

Appendix 3: scope and remit of the Education Scrutiny Panel

Appendix 4: terms of reference of the Welsh Language and Equality Steering Group.

10. Report author and background papers

Anwen Davies, Scrutiny Manager, Isle of Anglesey, Council Offices, Llangefni. LL77 7TW